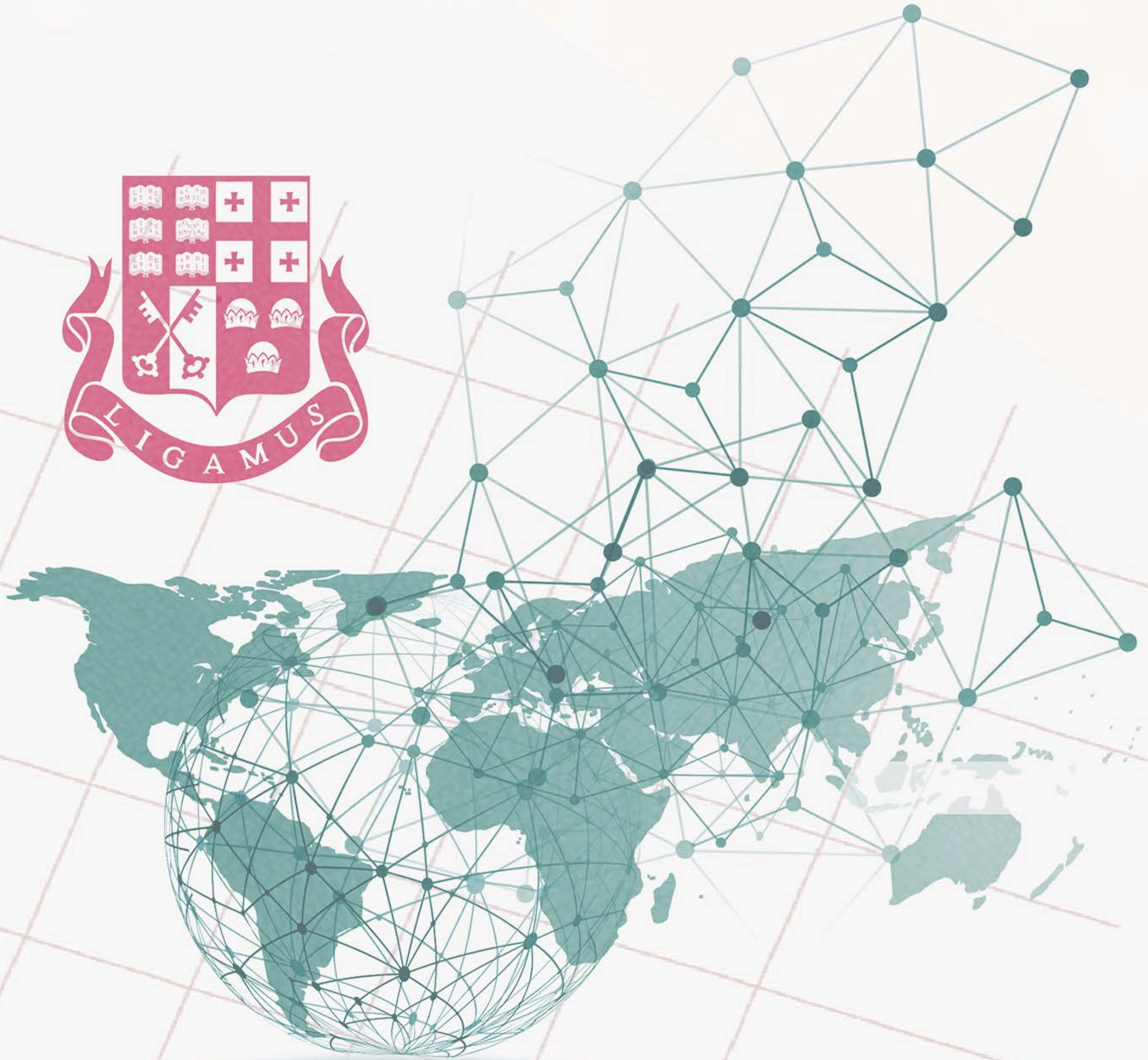


ILIA STATE UNIVERSITY



**WELCOME GUIDE FOR VISITING
SCHOLARS AND STAFF**



TABLE OF CONTENTS

- About Ilia State University
- International Relations office
- Nomination and Invitation process
- Before Arrival
- Arrival Information
- Local Transportation
- Mobile Internet and Shopping Malls
- Currency and Living Costs
- Accommodation & Living
- Academic & Work Culture
- Campus Facilities & Services
- University Campus
- About Georgia
- About Tbilisi
- Georgian Phrases
- Entertainment
- Cultural landmarks
- Georgian traditional food
- Georgian Wine
- Tips



ILIA STATE UNIVERSITY



Ilia State University (ISU) is a flagship public research and comprehensive higher education institution in Georgia that was established in 2006 as a merger of six different institutions, each having a long history and a diverse institutional profile. With the highest competition rate for Ph.D. programs in the nation, approximately 17 000 students including around 800 international students from 61 countries, 988 highly qualified academic staff, and with renovated research infrastructure, ISU has become one of the most desirable universities to study in the country over the last 10 years. ISU has been ranked by THE, Scimago Institutions Ranking, and others in top positions among regional and local universities.

ISU IN FIGURES



338 Professors &
803 Invited Teachers



113 Degree Programs
17 EMI Programs
9 Double Degree Programs



17 122
Students



239 Researchers
90 Ongoing Research
Projects



47 Research
Centers & Institutes



N1 Research
University in South
Caucasus (SCimago
Institutions Rankings)
1* in Country in the
World University
Rankings (THE) 2024



Over 50 Million
GEL - Income from
International Donors
during 2006-2018

4 FACULTIES:



Faculty of Arts &
Sciences



Faculty of Natural
Sciences &
Medicine



Faculty of Business
Technology and
Education



School of Law

INTERNATIONAL RELATIONS OFFICE

International Relations Office (IRO) (IRO) is the central administrative unit coordinating Erasmus +exchanges and is the main contact point for incoming students and staff from partner universities.

Erasmus+ Institutional Coordinator: Salome Bilanishvili, Head of International Relations Office

General email: iro@iliauni.edu.ge

Erasmus+ email: erasmusplus@iliauni.edu.ge

Contact Person: Maka Lortkipanidze, Deputy Head of International Relations Office

Email: maka_lortkipanidze@iliauni.edu.ge

Phone:

(+995 32) 222 00 09 (EXT. 367)

PIC / OID:

PIC Number: 999612937

OID Number: E10208135

Website: iro.iliauni.edu.ge/en

Postal Address:

Ilia State University

International Relations Office

Room T 107

Ilia Chavchavadze Avenue 45

Tbilisi 0179, Georgia



საერთაშორისო ურთიერთობების სამსახური

INTERNATIONAL RELATIONS OFFICE



NOMINATION AND INVITATION PROCESS

Before submitting your application to Ilia State University, you have to be selected and nominated by your home university for an exchange. The requirements and application procedures are determined by your home university. Please contact the relevant coordinator at your home university for information and guidance.

Erasmus+ Nomination Deadlines for institutions:

Fall Semester: May 31

Spring Semester: November 30

While applications are accepted on a rolling basis, nominations must be submitted at least one month prior to the planned mobility. Upon nomination, please contact iro@iliauni.edu.ge to finalize the agreement, secure a host, and obtain your invitation letter.

Teaching Mobility (STA):

Visiting staff must secure a host professor at Ilia State University to supervise the visit and coordinate the academic content and schedule.

For administrative staff mobility for training (STT):

Administrative staff of partner universities can visit ISU as part of their individual mobility any time during the academic year.

For further information visit the website:

[Erasmus + Incoming Students and Staff - International Relations Office](#)



BEFORE ARRIVAL

Visa & Entry Requirements:

EU Citizens: Visa-free entry allowed for up to 1 year.

Non-EU Citizens: Verify requirements at geoconsul.gov.ge.

Note: If a visa is required, you must apply for a C3 Visa (Short-term) or e-Visa for business/training. Do not enter as a tourist.

Mandatory Health Insurance: (New Rule: Jan 1, 2026)

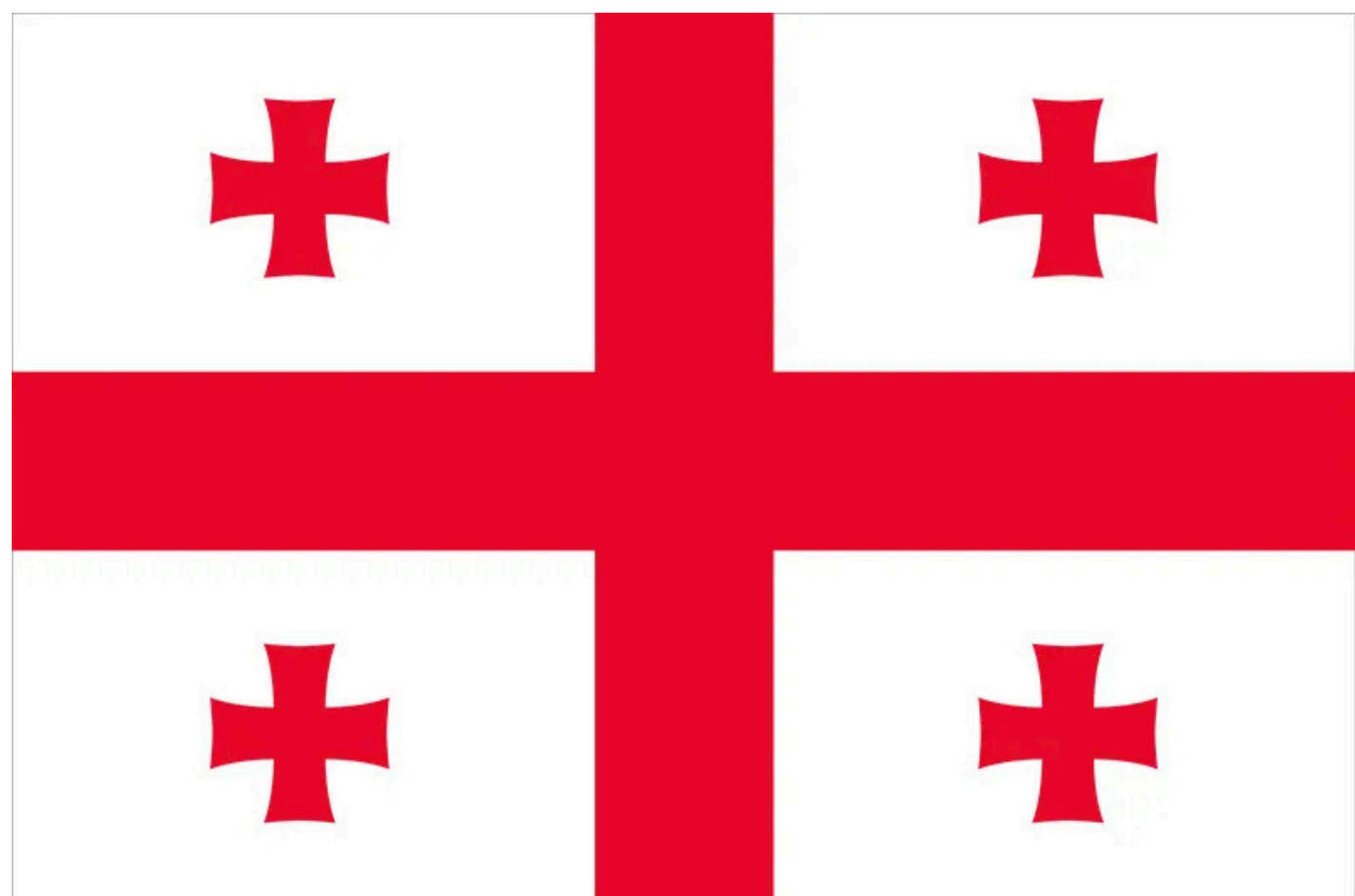
Requirement: All visitors without a Georgian Residence Permit must hold health and accident insurance for the full duration of their stay.

Format: The policy must be in English or Georgian.

Health and Safety Conditions: Georgia is generally a safe country with low levels of violent crime. Public and private healthcare services are available, with private clinics in major cities offering higher standards and English-speaking staff.

Emergency services number - 112

Normal safety precautions should be observed, including securing personal belongings and using licensed transportation. Incoming scholars and staff are encouraged to familiarize themselves with local laws, campus safety procedures, and guidance provided by their host institution.





ARRIVAL INFORMATION

Travel by plane to Georgia:

Georgia has two main international airports: **Tbilisi International Airport (TBS)**, the largest and busiest, and **Kutaisi International Airport (KUT)**, serving mainly low-cost and regional flights. Both airports connect Georgia with major European and regional cities.

Distance from Kutaisi International Airport to Tbilisi: approximately 230 km

Shuttle bus service from KUT to Tbilisi: Two main companies, Georgian Bus and Omnibus Express, operate regular shuttle buses from Kutaisi Airport to Tbilisi, with departures scheduled to match flight arrivals and departures. Tickets can be booked online in advance or purchased at the airport when you arrive.

Distance from Tbilisi International Airport to central Tbilisi:

~17 km – around 20–30 minutes by car / taxi depending on traffic.

Taxi & Ride-Hailing: Taxis are available 24/7 outside the Arrival Hall and recommended mean of transportation.

Expected cost to central Tbilisi:

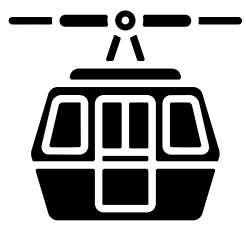
- Official airport taxi: ~40–80 GEL (fixed zones), but you need to have Georgian Lari for payment in cash
- Ride-hailing (Bolt, Yandex Go): typically, 25–45 GEL, often cheaper than traditional taxis. They accept card payments, allow to indicate exact destination locations and provides online receipts.

Bus: The municipal bus stop is located in front of the Arrival Hall and provides passenger transportation on route # 337 - Airport - Tbilisi Railway Station - Airport.

Shuttle Bus: Private shuttle services are available for pre-booking (please check with your hotel). These offer fixed pick-up/drop-off and shared or private rides between the airport and Tbilisi.

Tip: Use the official taxi counter or app rides rather than accepting offers from drivers inside the terminal to avoid overcharging.

LOCAL TRANSPORTATION

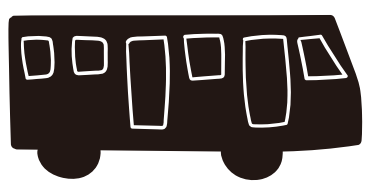


If you will need to use public transport in Tbilisi, check out the routes and real time timetables here: <https://ttc.com.ge/en>.



BUS - Busses run from 8 am till 11 pm

MINIBUS - Also called as “marshutka” run from 7 am till 12 pm.



METRO – The underground rail system operates two lines, the Akhmeteli-Varketili Line and the Saburtalo Line. Trains run from 6 am to midnight.



TAXI - Bolt: Using a taxi is the best option for getting around Tbilisi by car. The app “Bolt” is best for taxi services.

Single ride in all public transport (except cable car) for 90 minutes costs 1 GEL and you can use your bank card for payment inside the bus, metro, minibus.

A transportation card costs 42 GEL (monthly) and 250 GEL (yearly) and it covers all types of public transportation (Metro, Bus, Minibus and Cable Car.) You can purchase the card in Metro stations.





MOBILE INTERNET

We advise you to purchase a Georgian travel sim card specifically designed for short term visitors to ensure you have affordable internet connection throughout your stay. You can get Georgian sim card at the airport or in the city. There are few operator desks in the airport arrival hall e.g. for **Silknet** ([see packages here](#)) or **Magticom** ([see tourist offers here](#)).

SHOPPING MALLS

- **City Mall** - Address: [70 Vazha Pshavela Ave, Tbilisi 0186](#)
- **East Point** - Address: [2, Aleksandre Tvalchrelidze St, Tbilisi 0182](#)
- **Galleria Mall** - Address: [2/4 Shota Rustaveli Ave, Tbilisi 0168](#)
- **Tbilisi Mall** - Address: [16 km Agmashenebeli Alley, Tbilisi 0131](#)
- **Merani Shopping** - Address: [42 Shota Rustaveli Ave, Tbilisi 0114](#)





CURRENCY & LIVING COSTS

Georgia's national currency is the **Georgian Lari (GEL)**, which is subdivided into 100 tetri. Banknotes come in denominations of GEL 200, 100, 50, 20, 10, 5, 2, and 1.

ATMs are widely available, and credit cards are commonly accepted, but it is sometimes useful to have some cash as well.

You can exchange a small amount of money at Tbilisi International Airport for immediate expenses. It is recommended to exchange money at the bank, try to avoid exchanging money with street vendors or unofficial kiosks as they may have poor rates or hidden fees.

Georgia's cost of living is also relatively affordable compared to many Western countries, making it a budget-friendly destination for travelers.

Weekly living cost

Accommodation (hostel/guesthouse): €10–€20
per night

Food & drinks: €6–€15 per day (local eateries/market snacks)

Local transport: €2–€8 per day (metro/bus, occasional taxi)

Sightseeing/activities: €0–€10+ per day (many attractions are low-cost)



ACCOMMODATION OPTIONS

Iliia State University does not have a dormitory or other accommodation options for visiting staff, however, they can receive guidance and support from IRO in finding housing options according to their preferences. We have few hotel suggestions below:

Orion Tbilisi Hotel <http://hotelorion.ge/> From EUR 46; Distance from ISU 2.4 km
Address: Napareuli str. 5, Vake, 0179 Tbilisi City, Georgia Contact: (+995) 32 255 25 55 Rooms

Hotel Tbilisi <http://roomshotels.com/tbilisi> From EUR 90; Distance from ISU 3.3 km
Address: Merab Kostava Str. 14, 0108 Tbilisi City, Georgia Contact: (+995) 32 202 00 99

Holiday Inn Tbilisi <http://www.hi-tbilisi.com/> From EUR 85; Distance from ISU 4.3 km;
Address: 26 May Square 1, Saburtalo, 171 Tbilisi City, Georgia; Contact: (+995) 32 230 00 99

IOTA Hotel Tbilisi <http://iotahotels.com/Ge> From EUR 77; Distance from ISU 5.4 km;
Address: 10 Mikheil Lermontovi St, 0105 Tbilisi City, Georgia Contact: (+995) 32 240 30 10

Urban Lodge Hotels <https://bit.ly/3N7kZxY> From EUR 42; Distance from ISU 3.8 km;
Address: Makashvili Street 32-34, Mtatsminda, 0108 Tbilisi City, Georgia; Contact: +(995) 596 36 88 88

MIRAVERE Hotel <https://mira-hotels.com/en> From EUR 47; Distance from ISU 4.1 km
Address: 45 G Merab Kostava, Vera, 0179 Tbilisi City, Georgia Contact: (+995) 511 24 10 55

Pino Vere Palace Hotel <https://pinovere.ge/> From EUR 65; Distance from ISU 3 km;
Address: 8 Giorgi Kuchishvili Street, 0179 Tbilisi City, Georgia; Contact: (+995) 522 22 44 88

ACCOMMODATION OPTIONS

Margo Palace Hotel <https://bit.ly/3Fk14dp>; From EUR 39; Distance from ISU 4.9 km; Address: Mikheil Djavakhishvili (Elbakidze) Street 12, 0108; Tbilisi City, Georgia; Contact: (+995) 599 35 17 35

Vera Hills Boutique Hotel <https://bit.ly/3TW8KGW> From EUR 67; Distance from ISU 3.8 km; Address: Valerian Gunia street # 16/9, Vera, 0108 Tbilisi City, Georgia Contact: (+995) 32 200 28 28

City Center GNG <https://bit.ly/3zlxQHd> From EUR 26; Distance from ISU 800m; Address: G. Svanidze Street 4, Vake, 0172 Tbilisi City, Georgia; Contact: (+995) 571 57 22 11

Hilton Garden Inn Tbilisi Chavchavadze <https://bit.ly/3TFWtXf> From EUR 85; Distance from ISU 750 m; Address: Chavchavadze Avenue 64a, Vake, 162 Tbilisi City, Georgia Contact: (+995) 32 225 20 20

Pullman Tbilisi Axis Towers <https://bit.ly/3f5yCkl> From EUR 129; Distance from ISU 600 m; Address: 37M Chavchavadze Ave, Tbilisi 0179, Georgia; Contact: (+995) 32 200 33 22

Best Western Tbilisi City Center <https://bit.ly/3FgvfSP> From EUR 46; Distance from ISU 2.5 km; Address: 92 Barnovi Street Tbilisi, Vake, 0179 Tbilisi City, Georgia Contact: (+995) 32 222 70 70

Ramada by Wyndham Tbilisi <https://bit.ly/3SxEdhu> From EUR 75; Distance from ISU 3 km; Address: 14 Aleksandre Tsurtsunia Street, Tbilisi 00103, Georgia Contact: (+995) 32 222 85 28

Hotel ATLAS Abashidze <https://shorturl.at/eDLP6> From EUR 32; Distance from ISU 1.2 km Address: 70 Irakli Abashidze Street, Tbilisi 0162 Contact: (+995) 599 85 59 25

TbiliSee Hotel <https://bit.ly/3fepDOB> From EUR 73; Distance from ISU 8 km Address: Betlemi Street 24, 0105 Tbilisi City, Georgia 8.1 km Contact: (+995) 571 12 10 60

You can also use Airbnb for longer stays.

ACADEMIC & WORK CULTURE



Relationships First: Trust is paramount. Prioritize building personal rapport with colleagues over rigid adherence to rules.

Hierarchy & Titles: Address senior staff formally using titles (e.g., Professor Beridze) or honorifics (Batono [First Name] for men, Kalbatono [First Name] for women) until invited to be casual.

Communication: Face-to-face interaction is preferred. Emails may go unanswered, so visit colleagues in person for requests. Expect personal questions early on; this is a friendly gesture to establish connection.

Time Management: Time is viewed flexibly ("Georgian Standard Time"). While you should remain punctual, expect meetings to start 15–20 minutes late. Deadlines are often soft; frequent, friendly in-person reminders are recommended to ensure timely completion.



CAMPUS FACILITIES & SERVICES

LIBRARY

ILIAUNI Library is a learning and research space with a diverse collection of over 2 million monographs, textbooks, periodicals, and electronic resources in various languages. Students have access to 10 reading halls, 2 computer resource centers, and several other services to support their studies. Check out services and working hours [here](#)

UNIFOOD

Unifood is a catering facility located on both campuses of Ilia State University. Unifood offers ISU students delicious food from European and Georgian cuisine for a rather moderate price. Here you can enjoy free wi-fi and hang out with peers while also grabbing a bite. Unifood cafeterias are located:

Building A (Ilia Chavchavadze Avenue 32)

Building E (Ilia Chavchavadze Avenue 45)

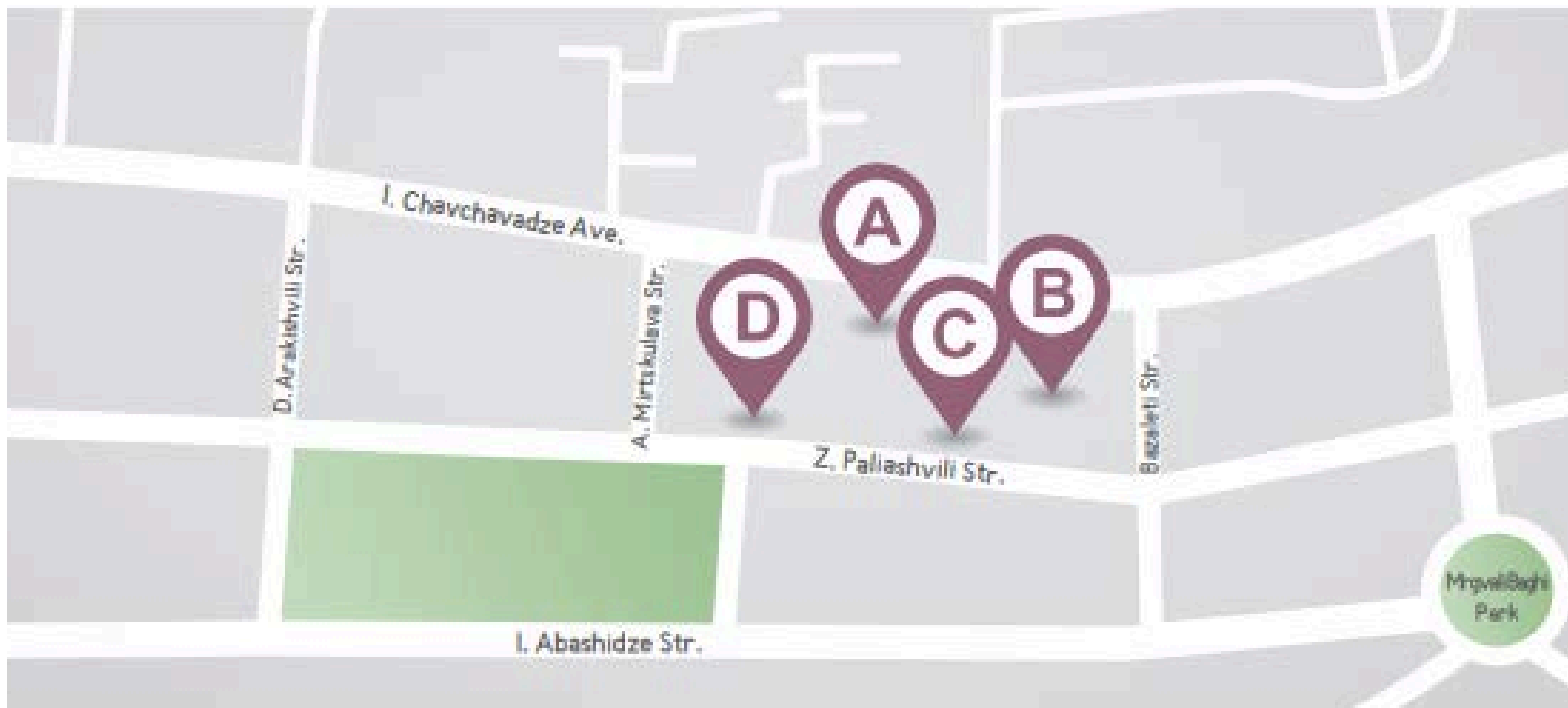
PSYCHOLOGICAL COUNSELING CENTER

The Psychological Counseling Center at Ilia State University is dedicated to supporting students with various psychosocial challenges, including anxiety, low mood, phobias, relationship issues, and stress-related conditions. Staffed by graduates of our Mental Health Master's Program, the center provides evidence-based counseling methods under regular supervision. Open since March 2019 and led by professors Nino Makhashvili and Jana Javakhishvili, the center offers individual and group sessions, along with skill-building workshops. Consultations are available both in-person and remotely.

Contact details:

E-mail: ispcc@iliauni.edu.ge

UNIVERSITY CAMPUS



Address:

A-D Buildings: Ilia Chavchavadze Avenue 32

E-S Buildings: Ilia Chavchavadze Avenue 45

UNIVERSITY CAMPUS

📍 Building A

- Book House "Ligamus" (floors I-II)
 - Administration and Information Center of the Faculty of Arts & Sciences (floor IV)
 - Administration and Information Center of School of Law (floor II)
 - Sul Khan-Saba Orbeliani Reading Hall (A 401)
 - Library Computer Resource Center (A 208)
 - "Unifood" (floor -I)
 - Iliauni Theater (courtyard)
 - Conference Hall (A 101)
-

📍 Building B

- Learning space of the Faculty of Arts & Sciences
 - Conference Hall (B 201)
-

📍 Building E

- Chancellery (floor I)
 - Development Office (floor I)
 - International Relations Office (floor I)
 - "Unifood" (floor I)
 - Administration and learning space of the Faculty of Business, Technology & Education (floors II, III, IV)
 - Reading Hall of Ilia (floor II)
 - Library Computer Resource Center (E 307)
 - Student space (floor -I)
-

📍 Building F

- Rectorate (floor II)
 - Office of the head of administration (floor II)
 - University Administration: Offices and Services
 - Department of Student Affairs (F 105)
-

📍 Building G

- Conference Hall (G 106)
 - Learning space of the Faculty of Natural Sciences & Medicine
-

📍 Building H

- Administration of the Faculty of Natural Sciences & Medicine
-

📍 Building C

- Learning space of the Faculty of Arts & Sciences
 - Learning space of the School of Law (floor IV)
 - Learning space of the English Language Center
 - Administration of the English Language Center
 - Child Development Institute
 - Advanced Visualization and Virtual Reality Laboratory (VR Lab Iliauni)
-

📍 Building D

- Fine and Applied Arts Center of Ilia State University (floors V-VI)
 - Learning space of the Faculty of Arts & Sciences
 - Music Center
-

📍 Building S

- Industrial Innovation Laboratory of the Future (FABLAB ILIAUNI)
 - Austrian Center Hall (S 506)
 - Italian Center Hall (S 501)
 - Hall of Oriental Studies (floor IV)
-

📍 Building T

- Resting space (floor I)
 - Lecture hall-media center (floor I)
 - Geotechnical laboratory (floor I)
 - Laboratory of constructions (floor I)
 - Electrical and computer engineering student design laboratory (floor II)
 - Analogue electronics laboratory (floor II)
 - Digital Electronics Laboratory (floor II)
 - Hydraulics laboratory (floor II)
 - Information technology room (floor III)
 - Computer room (floor IV)
 - Library (floor IV)
 - Technological lab - Unilab (floor IV)
 - Classrooms (floors I, II, III, IV)
 - Work room (floors II, III, IV)
-



ABOUT GEORGIA

A land of contrasts under the high peaks of Caucasus, at the crossroads of East and West. Country of unique, welcoming culture and world-famous hospitality. A place where an ancient artistic heritage and unique traditions meet modern lifestyle. Cradle of wine, one of the oldest wine producing regions of the world.

A land full of colors, sights, historic monuments and UNESCO heritage sites. Homeland of first Europeans, with a unique alphabet and language, music and dance.

A multiethnic country with the richest history, beautiful monuments of architecture and picturesque nature, located between the ghats of the Greater and Lesser Caucasus Mountains. There are about 300 mountain, coastal climatic, balneological and mud resorts in Georgia.



ABOUT TBILISI

Tbilisi is not only the capital of Georgia, but it has also always been considered as the “great metropolis of the Caucasus.” Founded in the 5th century, Tbilisi is a city of ancient history and a multiethnic, multicultural, and multireligious city because of its fascinating mix of European and Asian cultures. Every corner of this welcoming place is full of stories and adventures. Tbilisi is home to major cultural events held in Georgia, starting from international exhibitions, concerts and festivals, and extending to small-scale, extraordinary cultural celebrations found on tiny stages and squares throughout the city. For more information, download the “Tbilisi Loves You” app – the most extensive mobile source for the city of Tbilisi - from your AppStore or PlayStore!



GEORGIAN PHRASES

<p>Hello გამარჯობა! [gamarjoba!]</p>	<p>Thank you მადლობა [Madloba]</p>	<p>You are welcome არაფრის [ara'pris]</p>
<p>Yes / No კი / არა [ki / ara]</p>	<p>Excuse me უკაცრავად [ukatsravad]</p>	<p>Sorry მაპატიეთ [map'at'iet]</p>
<p>Please თუ შეიძლება [tu sheidzleba]</p>	<p>I don't understand ვერ გავიგე [ver gavige]</p>	<p>Goodbye ნახვამდის [nakhvamdis]</p>
<p>My name is ... მე მქვია ... [me m'kvia]</p>	<p>How Are You? როგორ ბრძანდებით? [rogor brdzandebit?]</p>	<p>I'm a student მე ვარ სტუდენტი [me var st'udent'i]</p>
<p>Where do you live? სად ცხოვრობთ? [sad tskhovrobt?]</p>	<p>I'm good, thanks გმადლობ, კარგად! [gmadlob, k'argad!]</p>	<p>How much is this? რა ღირს? [ra ghirs?]</p>
<p>I live in Georgia ვცხოვრობ საქართველოში [vtskhovrob sakartveloshi]</p>	<p>What is your name? რა გქვიათ? [ra g'kviat?]</p>	<p>What is this? რა არის ეს? [ra aris es?]</p>
<p>Can I help you? დახმარება ხომ არ გინდა? [dakhmareba xom ar ginda?]</p>	<p>Can you help me? შეგიძლია დამეხმარო? [shegidzlia damekhmaro?]</p>	<p>Are you okay? კარგად ხარ? [k'argad khar?]</p>
<p>Where is the airport? სად არის აეროპორტი? [sad aris aerop'ort'i?]</p>	<p>Nice to meet you სასიამოვნოა თქვენი გაცნობა [sasiamovnoa tkveni gatsnoba]</p>	<p>need a doctor ექიმი გჭირდება [ekimi mch'irdeba]</p>
<p>I am sick ცუდად ვარ [tsudad var]</p>	<p>Call the police პოლიცია გამოიძახეთ! [p'olitsia gamoidzakhet!]</p>	<p>Help! დამეხმარეთ! [damekhmeret!]</p>
<p>I am sick ცუდად ვარ [tsudad var]</p>	<p>Call the ambulance! სასწრაფო გამოიძახეთ! [sasts'rapo gamoidzakhet!]</p>	

ENTERTAINMENT

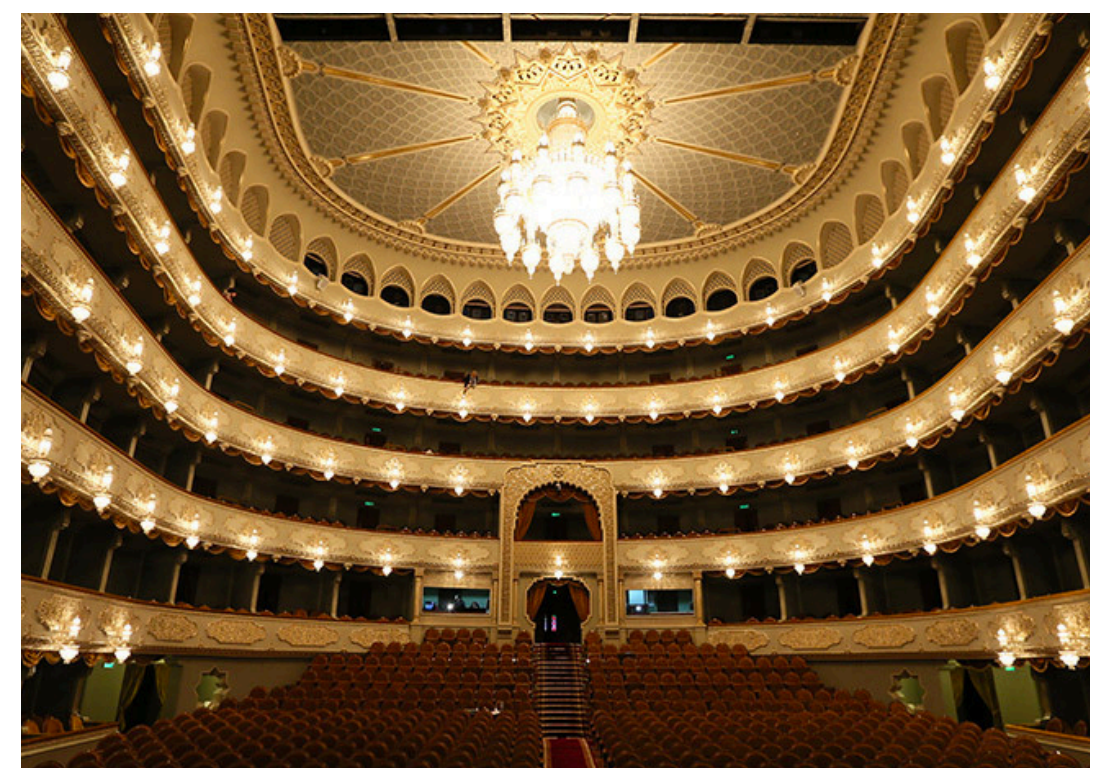


CINEMAS

- **Amirani** - [Kostava str. 36 Cavea](#)
- **Galleria Tbilisi** - [Rustaveli Avenue 2/4](#)
- **Tbilisi Mall** - [16th km Davit Agmashenebeli Alley](#)
- **East Point** - [Aleksandre Tvalchrelidze Str. 2](#)

THEATRES

- **Rustaveli Theater** - [Rustaveli ave. 117](#)
- **Kote Marjanishvili Theater** - [Marjanishvili str. 8](#)
- **Iliauni Theater** - [Chavchavadze ave. 32a](#)
- **Liberty Theater** - [9 Sul Khan-Saba St, Tbilisi](#)
- **Rezo Gabriadze Theater** - [Shavteli str. 13](#)



OPERA

Opera House - [Rustaveli ave. 25](#)

MUSEUMS

- **Georgian National Museum & Soviet Occupation Museum** - [Rustaveli ave. 3](#)
- **Art Museum** - [Lado Gudiashvili str. 1](#)
- **National Gallery** - [Rustaveli ave. 11](#)
- **Ethnographic Museum** - [Kus Tba road 1](#)
- **For more please visit:** www.museum.ge

CULTURAL LANDMARKS



- Mtskheta - 21 km from Tbilisi
- Mestia (236 km)
- Ushguli (277 km) and other villages in Svaneti
- Vardzia (213 km)
- Batumi (340 km to 378 km)
- Kazbegi (155 km)
- Gudauri (113 to 122 km)
- Signaghi, Kakheti Region (110 to 115 km)
- Kutaisi (188 km)
- Ananuri (60 to 64 km)
- Uplistsikhe Ancient Cave City (80 to 103 km)
- Tusheti (220 km)
- Rabati Castle (200 km)

TRADITIONAL FOOD

Khachapuri - also known as the Georgian Cheese Bread is quite simply an oval shaped bread, topped with cheese, butter and an egg.



Khinkali (Soup Dumplings) - Large, twisted dumplings usually filled with spiced meat (pork and beef) and cilantro. The magic is the broth trapped inside.

Pkhali - A pâté-like appetizer made from minced vegetables (usually spinach, beets, or green beans) mixed with ground walnuts, vinegar, garlic, and herbs. They are served as colorful balls garnished with pomegranate seeds.



Mtsvadi (Meat Skewers) - also known as Meat Skewers, is a traditional barbeque dish made with cubes of meat placed on a skewer and grilled.

Churchkhela - a sweet candy made out of nuts and grape juice moulded into a candle shape.



GEORGIAN WINE

Georgia is widely considered the birthplace of wine, with an 8,000-year history.

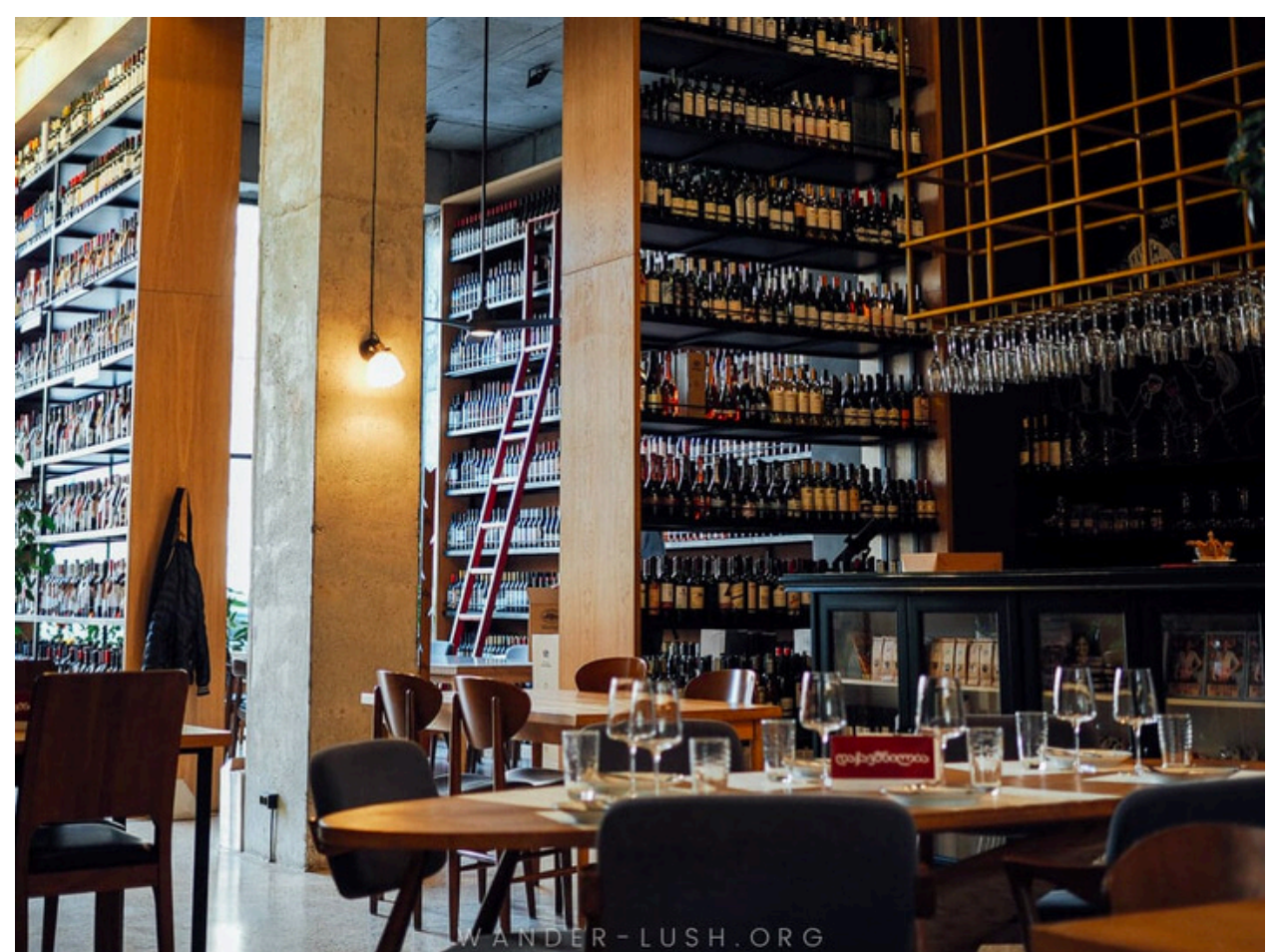
Qvevri Wine: The traditional method involves fermenting grapes (skins, stems, and all) in large clay vessels (qvevri) buried underground.

Amber Wine: White grapes fermented with their skins turn a deep amber/orange color. These wines are tannic, complex, and pair perfectly with the rich walnut flavors of the food.

Wine tasting places

- **8000 Vintages** - 3 branches: [Tabukashvili Street](#); [60 Irakli Abashidze Street](#); [26 Sul Khan Tsintsadze St.](#) [booking & hours.](#)
- **DADI Wine Bar & Shop** - [4 Shalva Dadiani St](#); [hours & info.](#)
- **Vino Underground Tbilisi** - [MRR2+9GQ, 15 Galaktion Tabidze St](#); [hours & info](#)
- **Nino Meris Wine Shop** - [13 Sioni St, Tbilisi](#); [hours & info](#)

There are more places that offer wine tastings, we recommend to do more research.



TIPS

CHECK OUT 10 THINGS YOU MIGHT NOT KNOW ABOUT GEORGIA:

- Georgians do not call their country Georgia, it is called Sakartvelo (საქართველო) in Georgian. While in the bus, you can enter and leave through any door, not necessarily enter from front or get off from back.
 - Georgians usually drink a lot, maybe better not to compete.
 - Georgians drive crazy; keep this in mind for your safety.
 - While crossing the street, look both sides, even though it is a green light for pedestrians.
 - People are very helpful. If you ask for directions to a location to a random person on the street, they may not only tell you where it is but may also directly walk with you to show you.
 - Most food stores and shopping malls are open until 22:00 every day with no breaks.
 - You may find many 24/7 markets and pharmacies throughout the city.
 - If you want to call a taxi, it is easiest and cheapest to call a taxi company.
 - You only have to give your location and destination, and the taxi will arrive in a few minutes. Tipping is usual in Georgia but not obligatory.
 - Georgia is a “close distance country”. So do not be surprised if after a few meetings someone will give you a kiss and hug.
-

Connect with us



45 Ilia Chavchavadze Avenue,
Tbilisi 0179, Georgia



+995 322 22 00 09



iro@iliauni.edu.ge



iro.iliauni.edu.ge/en